

*WM-180 shown in Midnight Blue with optional S-550 low voltage beacon/strobe area light*

### **WALL MOUNTED – INTERACTIVE PUBLIC ADDRESS COMMUNICATIONS AMPLIFIED SPEAKER ENCLOSURE**

Code Blue's **WM-180** Public Address System (PAS) provides a wall mounted option for deploying remote amplified speakers to complement an existing or new mass notification system. The speaker array is constructed of the same vandal resistant ABS plastic utilized for the free-standing pedestal PAS models, and consists of a rugged steel enclosure for interior/exterior application.

Sound dispersion is 180° via three uniquely designed speaker portals each containing its own dedicated speaker. These tuned portals promote maximum audio clarity to accurately broadcast messages to your intended audience.

The **WM-180** is available in three models: Analog or IP on-board interactive controller card, and no controller. The controller board enables the **WM-180** to be directly managed by Code Blue's Blue Alert® mass notification software; granting the user unparalleled messaging options. The controller also monitors the amplifier and speaker for various failures and reports those to the appropriate maintenance personnel; conserves energy, shutting the system off when not in use; and allows the user to call a single **WM-180** unit for a locale-targeted message.

Without the controller card, the **WM-180** can be connected via audio and control cables to a nearby IA4100 or IP5000 speakerphone allowing similar control and monitoring capabilities. As a standalone amplified speaker array, the **WM-180** becomes a 600 Ohm audio input amplifier without controls and is always live and ready to broadcast at a moments notice.

#### **STANDARD FEATURES**

- ▶ ToolVox® Communication Manager compatible with Blue Alert® mass notification system
- ▶ Proprietary One-Cycle Sound™ control w/ output feedback
- ▶ Internal and remote volume adjustment
- ▶ IA4100, IP5000 or no control options
- ▶ Synchronized switching frequencies
- ▶ FXS, IP or no analog controller
- ▶ Remote disable
- ▶ Monitoring features include signal clipping, output current and temperature
- ▶ Full over current, under voltage and over temperature protection

#### **OPTIONAL FEATURES**

- ▶ S-550 24v beacon/strobe area light
- ▶ Custom colors (for entire assembly)

**UNIT SPECIFICATIONS**

|                            |                                       |
|----------------------------|---------------------------------------|
| Height (w/ beacon/strobe)  | 20.10" (51.05 cm)                     |
| Height (w/o beacon/strobe) | 15.12" (38.40 cm)                     |
| Width                      | 15" (38.1 cm)                         |
| Depth                      | 10.40" (26.42 cm)                     |
| Housing Material, steel    | .06" (.15 cm)                         |
| Housing Material, speaker  | Acrylonitrile Butadiene Styrene (ABS) |
| Overall Weight             | 20 lbs. (9.07 kg)                     |

**UNIT FINISH COLORS**

|                         |   |
|-------------------------|---|
| Standard Painted Finish | Metal Gray enclosure w/molded Gray speaker array  |
| Optional Painted Finish | British Racing Green, Cardinal Red, Dark Bronze, Gloss White, Gloss Black, Medium Bronze, Midnight Blue, Safety Blue, Safety Red, Safety Yellow |
| Custom Painted Finish   | Custom colors from Pantone® color chart or sample are available as a special order  |

**PAS SPEAKER SPECIFICATIONS**

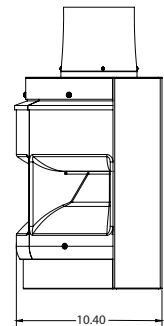
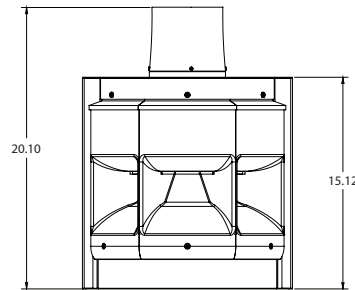
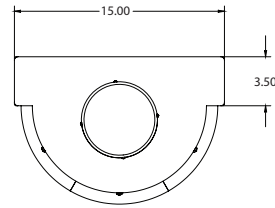
|                      |                         |
|----------------------|-------------------------|
| Frequency Response   | 500Hz-7kHz              |
| Power Capacity (RMS) | 210w continuous program |
| Impedance            | 2.7 Ohms combined       |
| Diaphragm Material   | Mylar                   |

**PAS AMPLIFIER SPECIFICATIONS**

|  |                          |
|--|--------------------------|
| Frequency Response                         | 20Hz-20kHz, $\pm 0.5$ dB |
| Output Power (w/in frequencies 450Hz-7kHz) | 210 watts                |
| Output Power                               | 400w (0.1% THD)          |
| Maximum Output Power                       | 500w (1% THD)            |
| Sensitivity                                | 3.5 Vrms                 |
| Gain                                       | 21-23dB, min. - max.     |
| Distortion                                 | 0.05% (0.03% average)    |
| Signal to Noise                            | 117dB                    |

**24v AC LED BEACON/STROBE AREA LIGHT OPTION**

The combination LED blue beacon and strobe assembly distributes a visually powerful, constant light for rapid unit location recognition. The integrated LED can be programmed for various strobe effects and remotely activated.

**UNIT DIMENSIONS**


- Specifications subject to change without notice or obligation on the part of the manufacturer.