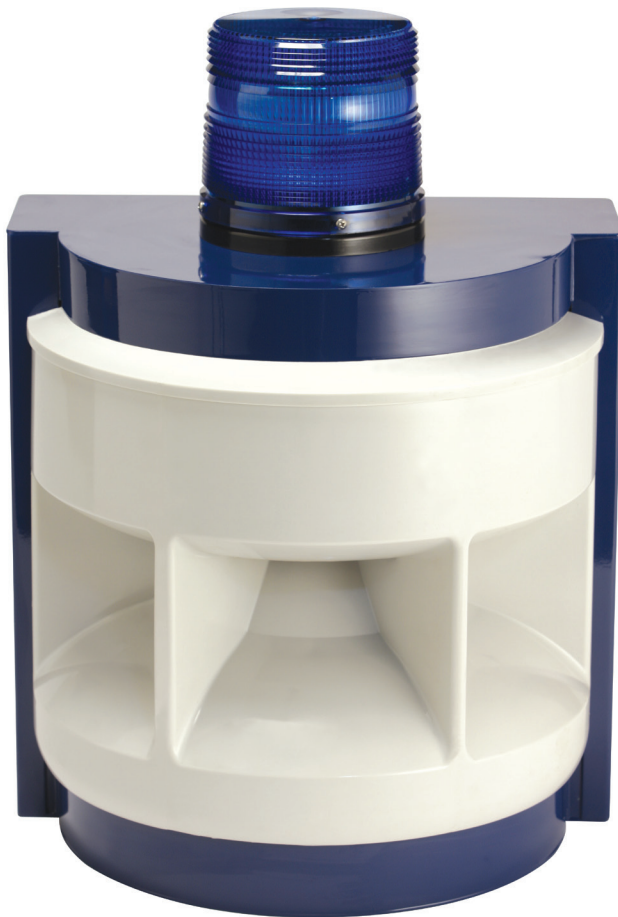


WALL MOUNT – INTERACTIVE PUBLIC ADDRESS COMMUNICATION SYSTEM

STANDARD FEATURES

- ▶ ToolVox® Communication Manager compatible with Blue Alert®, EMS and UPD software applications
- ▶ Proprietary One-Cycle Sound™ control w/ output feedback
- ▶ Internal and remote volume adjustment
- ▶ Code Blue IA4100, IP5000 or NC options
- ▶ Synchronized switching frequencies
- ▶ 2x150w switching amplifiers
- ▶ FXS, IP or no analog controller
- ▶ Remote disable
- ▶ Silent turn-on
- ▶ Full protection:
 - *Over current protection short to chassis ground*
 - *Over current protection to speaker short*
 - *Power supply under voltage lockout*
 - *Over temperature protection*
- ▶ Monitor outputs:
 - *Protect, clip and signal present indicators*
 - *Output current monitor*
 - *Temperature monitor*

PAS SPEAKER SPECIFICATIONS

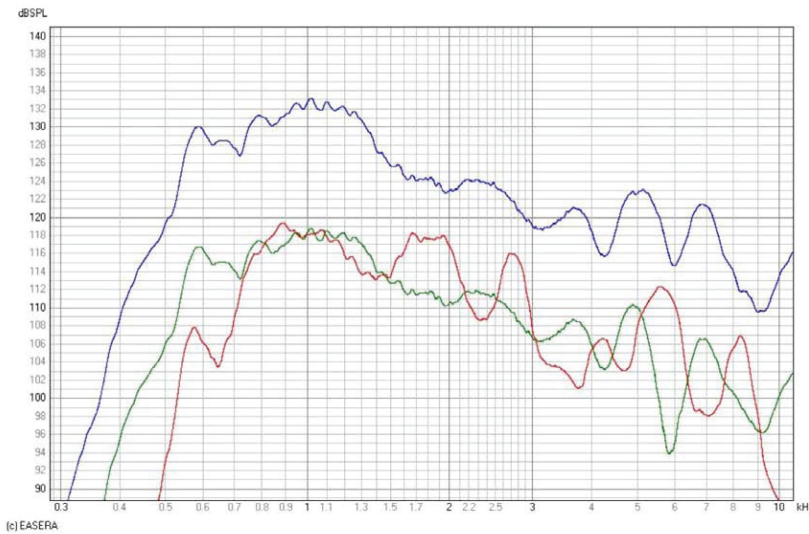
| | |
|--------------------|-------------------------|
| Frequency Response | 450Hz-7kHz |
| Power Capacity | 210w continuous program |
| Impedance | 2.7 Ohms |

PAS AMPLIFIER SPECIFICATIONS

| | |
|--|----------------------------------|
| Frequency Response | 20Hz-20kHz, ±0.5dB |
| Output Power (w/in frequencies 450Hz-7kHz) | 210 watts |
| Output Power | 150w (20Hz-20kHz, 0.1% THD) |
| Maximum Output Power | 160w (20Hz-20kHz, 1% THD) |
| Sensitivity | 3.5 Vrms |
| Gain | 21-23dB, min. - max. |
| Distortion | 0.05% (0.03% average) |
| Signal to Noise | 117dB |
| Noise Floor | 35uV (input shorted, A-weighted) |
| Voltage | 24v AC |
| Peak Current | 2.8 A |
| Damping Factor | 375 Ohms |
| Power Bandwidth | 60kHz |
| Small Signal Bandwidth | 90kHz |

PAS SPEAKER COMPARISON MEASUREMENTS

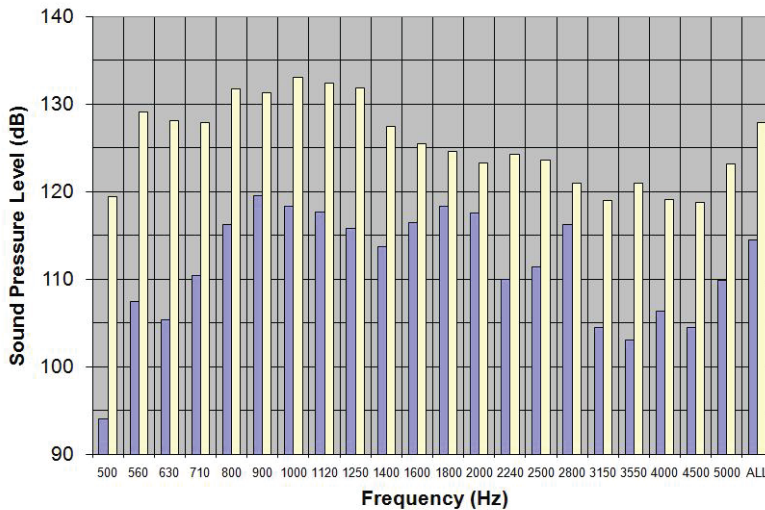
Tests were conducted by a third-party independent laboratory.



Graph depicts the competitor speaker at maximum power, PAS speaker at an equivalent level and at maximum output.

The Code Blue system is not only louder, but maintains a smoother frequency response and better low end.

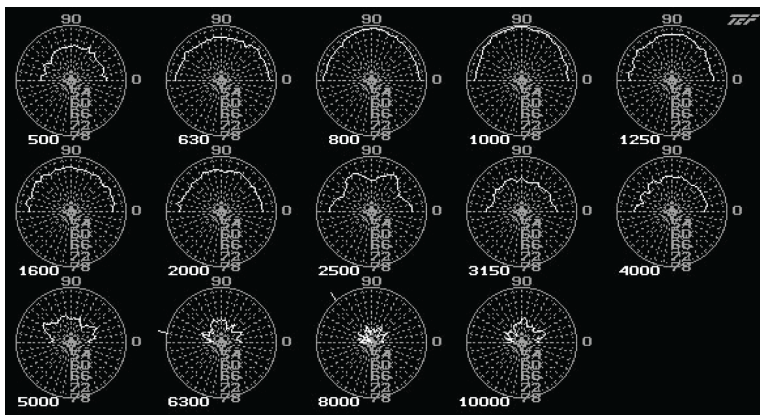
- PAS speakers at max. output (40v input)
- PAS speaker at level equal to competitor max. output (8.5v input)
- Competitor speakers at max. output

Maximum Output at 1m


The chart displays the maximum output of both systems on 1/3 octave increments.

Code Blue's new system averages approximately 12dB louder than the competitive system. 12dB is a 16-to-1 ratio of output power.

- Competitor maximum output
- WM-180 w/ 40v input



This measurement illustrates the PAS horns' asymmetrical design, creating a consistency at all frequencies covering its horizontal dispersion. The result is that a listener standing under the Code Blue unit would hear a reduced level, but uniform frequency response.