



Code Blue®

VOIP System

CODE BLUE VOICE-OVER-IP NETWORK

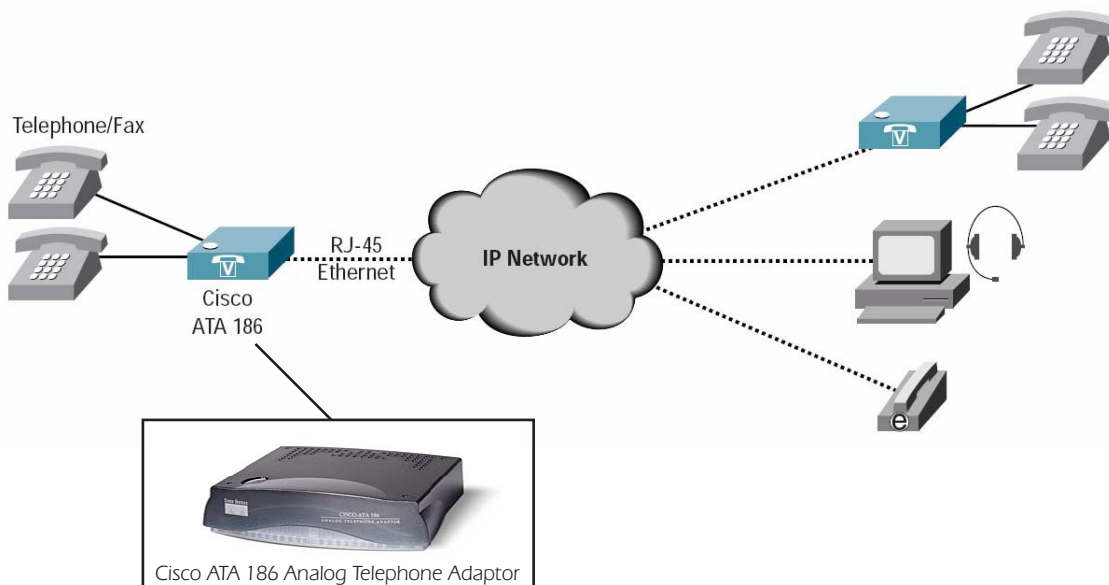
Code Blue Speakerphones may be connected to a VOIP network using an analog telephone adaptor (ATA) in the same manner as a fax machine, dial-up modem or any other single-pair, analog device. An ATA device connects to the network using a standard network cable via an RJ45 connection and the Code Blue speakerphone connects to the ATA via an RJ11 connection.

The image below is a simple illustration using Cisco's ATA 186 to connect two analog devices to the network (the number of analog devices that a single ATA can connect to the network is limited by the make and model of the ATA used).

Code Blue Corporation does not manufacture ATA devices. It is Code Blue's recommendation that the same company that supplies the standard hardware for the VOIP system should supply the ATA device.

When using an ATA the Speakerphone's ability to communicate to CMS and RPD software is limited; please call Code Blue for details.

ENDPOINT FOR AN END-TO-END BROADBAND SYSTEM



© 1992-2002 Cisco Systems, Inc.